

homewardbath

AQUARITE DELUXE

Model: HW205930

Installation Manual



Table of Contents

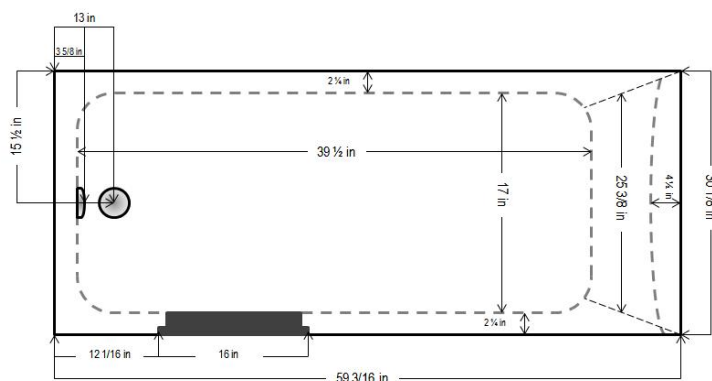
Diagrams	1
Tools Needed for Installation	1
Notice to Installers	2
Packing List	2
Hinge Assembly	2
Drain assembly Information	3
Installation & Assembly	4

**Manufacturer reserves the right to change specs or features at any time.
Please check to confirm details. 1-866-783-2661**

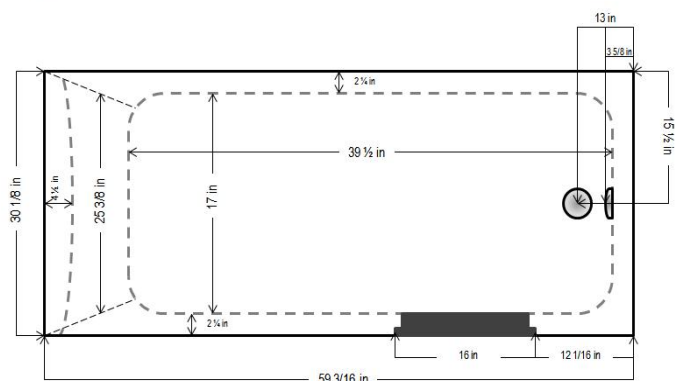
Note: Holes for the drain and overflow are to be made by installer. The centers are marked. The hole for drain is 2 in or 51mm. The hole for the overflow is 2 ½ in or 64mm.

DIAGRAMS:

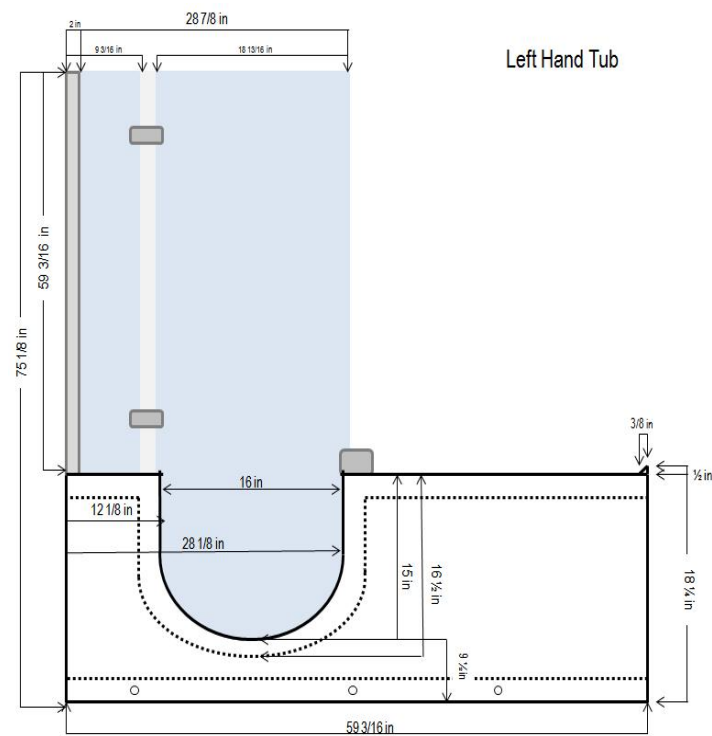
Left Hand Tub



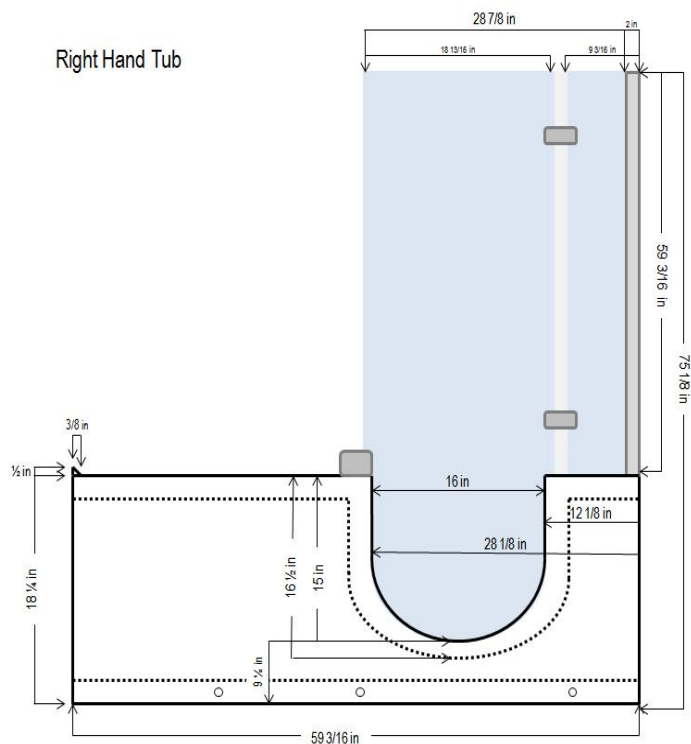
Right Hand Tub



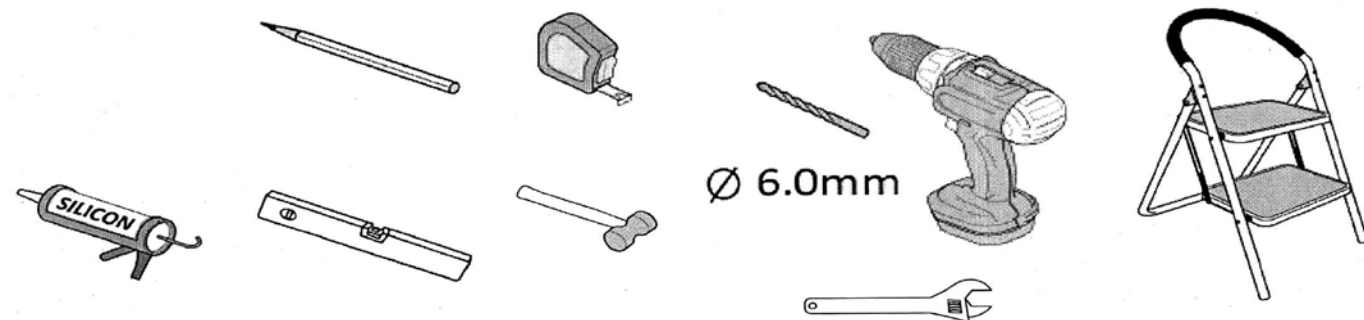
Left Hand Tub



Right Hand Tub



TOOLS NEEDED FOR INSTALLATION:








NOTICE TO INSTALLERS:

- ✓ Tub must be leveled in final resting position, mark the placement, and level. All feet must touch the floor.
- ✓ It is advised to have the tub onsite before preparing drain location.
- ✓ Make sure the floor can withhold the weight of the product.
- ✓ This is a freestanding tub. You must account for the length of the skirt if tiling the tub.
- ✓ Make sure the door assembly is tested for water leakage before tiling around the tub. If there is a problem with the door sealing, you will have more adjustment options available to correct the issue.
- ✓ Heated air jet system requires 110V / 20 amp dedicated line
- ✓ Microbubble system requires 110/120V 15 amp breaker

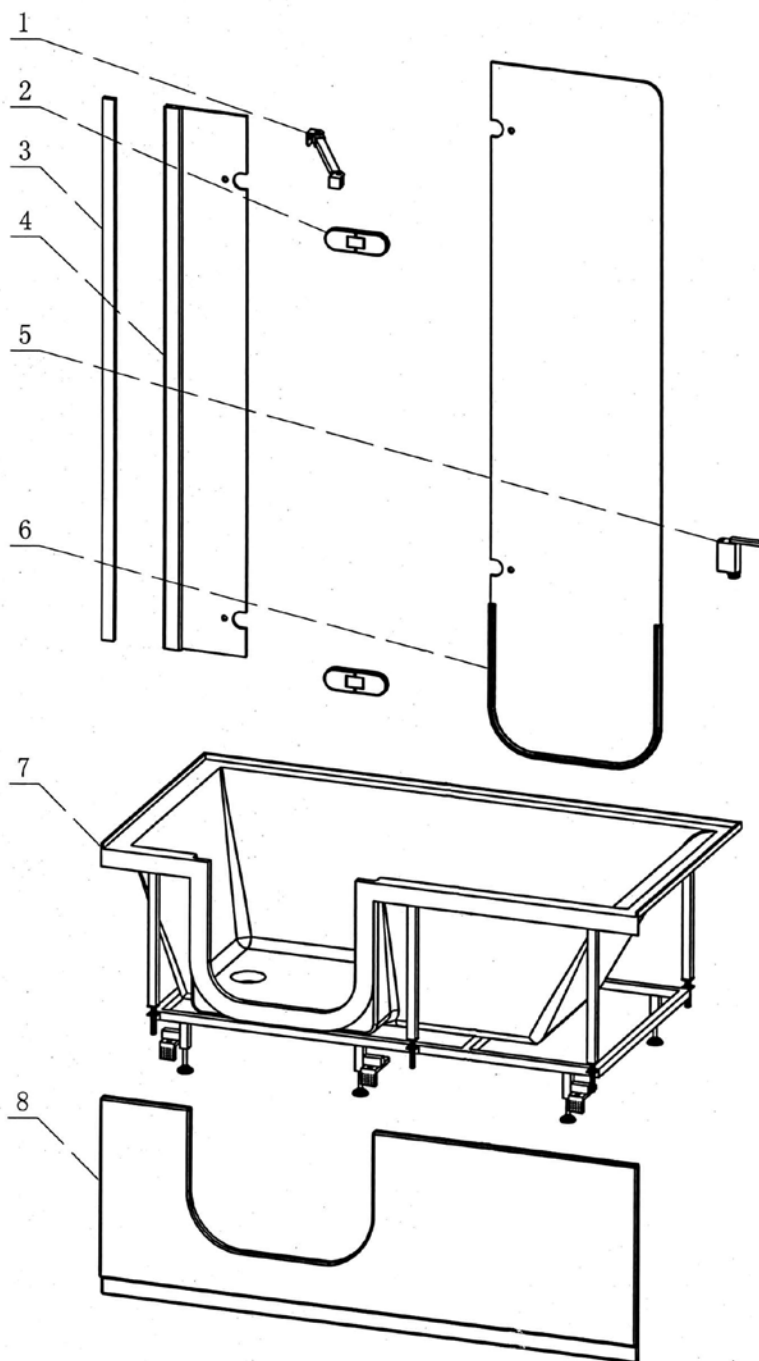
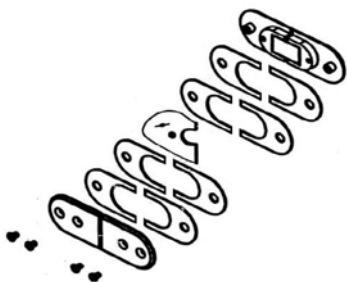
Manufacturer reserves the right to change specs or features at any time. Please check to confirm details. 1-866-783-2661

PACKING LIST:

NO	Description	Qty
1.	Wall Bracket	1
2.	Hinge	2
3.	Aluminum Wall Mount	1
4.	Fixed Glass	1
5.	Door Lock	1
6.	Hanging Glass Door	1
7.	Bathtub	1
8.	Tub skirt (pre-mounted)	1
9.	ST4*35	4
10.	ST4*20	1
11.	SE4*10	2
12.	Door Cap	2
13.	6mm Plastic swell	4
14.	Plastic door seal (not pictured)	1

- 9  ST4*35
- 10  ST4*20
- 11  SE4*10
- 12  Decor cap
- 13  6mm Plastic swell particle

HINGE ASSEMBLY:



DRAIN ASSEMBLY INFORMATION

Note: One 8in section of Schedule 40, 1 ½ in drain pipe for item #8 of water bath waste system will be needed in addition to the drain kit included with the tub.

Step 1: Cut the 1 ½" Schedule 40 pipes (Item 8 and Item 10) to the desired lengths to fit the tub.

Step 2: Using the proper solvent cement, assemble the bath drain pipes and fittings (Item 7 through Item 11).

Step 3: Place foam gasket (Item 12) onto overflow elbow (Item 11).

Step 4: Insert overflow elbow and foam gasket assembly into the tub overflow hole from the back of the tub.

Step 5: Screw on retainer nut (Item 13) from inside of tub. Hand-tighten only.

Step 6: Secure drain elbow (Item 7) and drain flange gasket (Item 6) under the tub by screwing in the strainer body (Item 5) through tub drain hole from inside the tub. If not testing the bath waste, skip to Step 8.

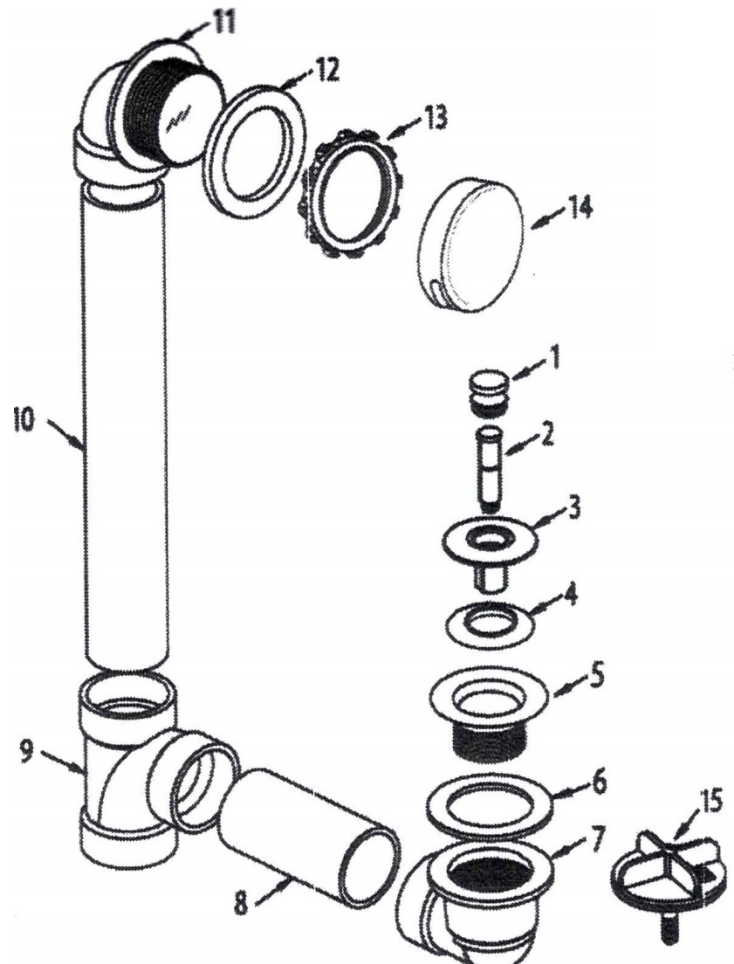
Step 7: Screw the strainer test plug (Item 15) into the strainer body (Item 5) and test the system. Once testing is complete, remove the strainer test plug (Item 15).

Step 8: Cut away the orange test membrane from the overflow elbow (Item 11).

Step 9: Snap on the overflow plate (Item 14) with the slot facing downward.

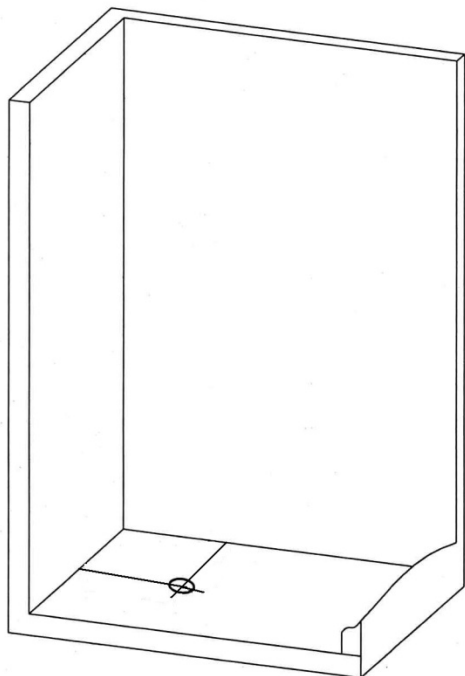
Step 10: Install the stopper assembly (Item 1 through Item 4) into the strainer body (Item 5).

Note: Items 1 through 4 may vary depending on the type of stopper assembly being used.

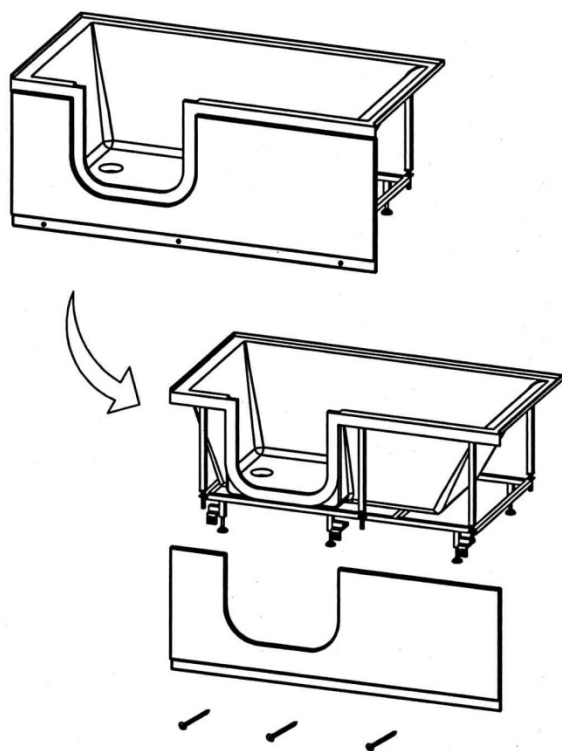


INSTALLATION & ASSEMBLY

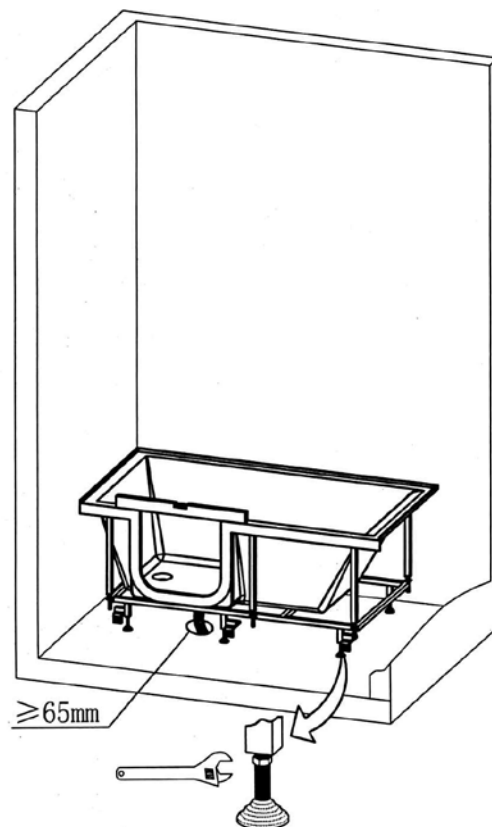
1. Walls and floor must be clear of any debris. Note: Tub comes with 90 degree drain; make sure your drain location will work with the drain.



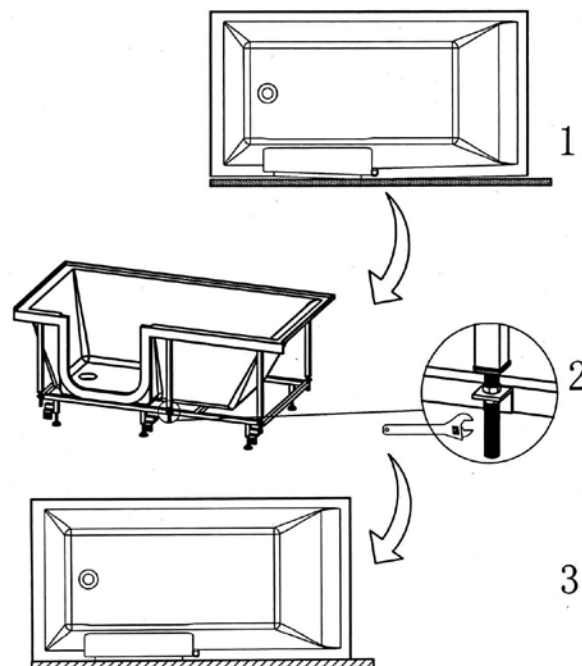
2. Remove the skirt off the tub for easy access.



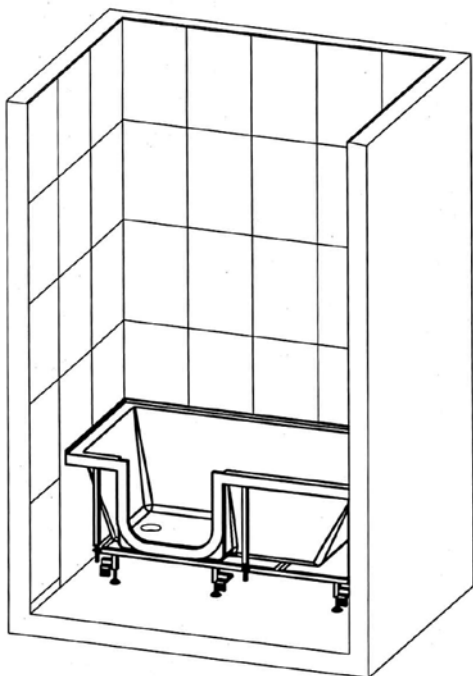
3. Place the tub in its final resting place; adjust all the legs to be touching the floor. Level the tub in place.



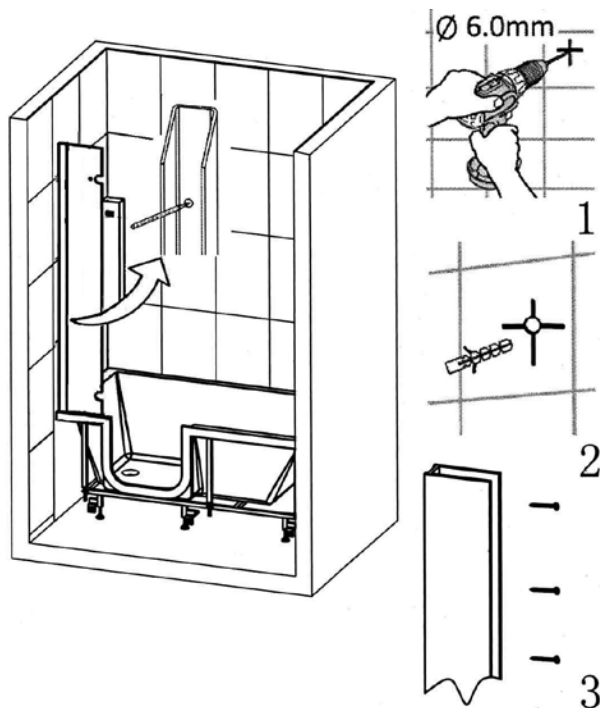
4. With the level, check the outside of the tub to be leveled. Adjust the feet for leveling.



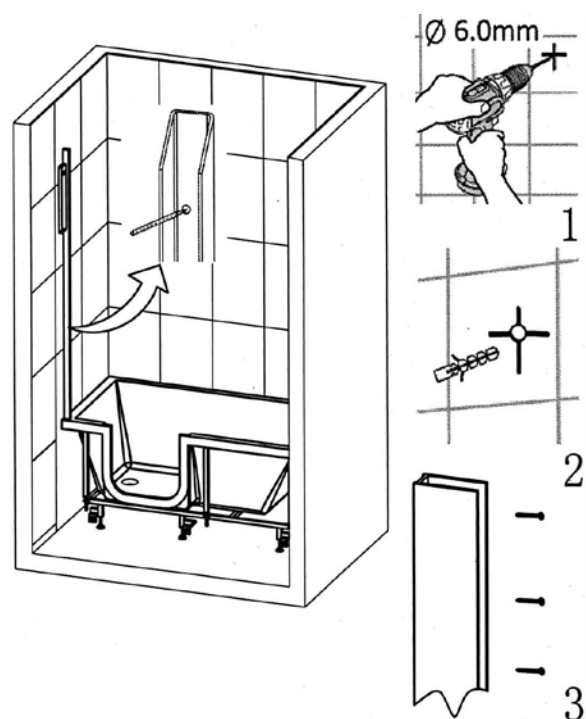
5. Fix the bathtub, tighten the screw nut.



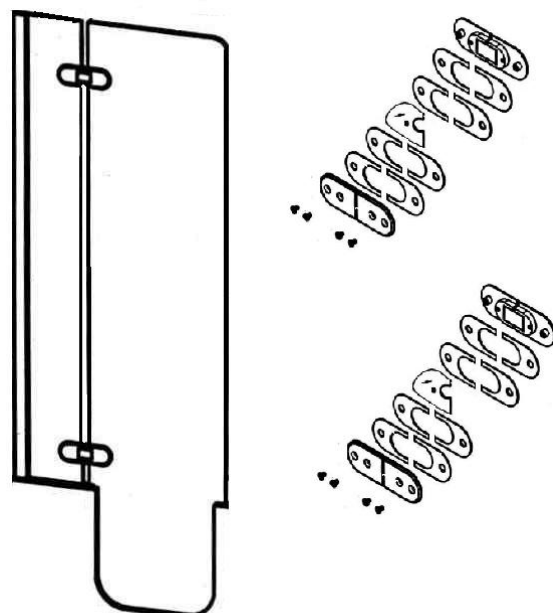
6. Install the fixed glass onto the tub and into the aluminum wall mount. Use level to mark all hole locations.



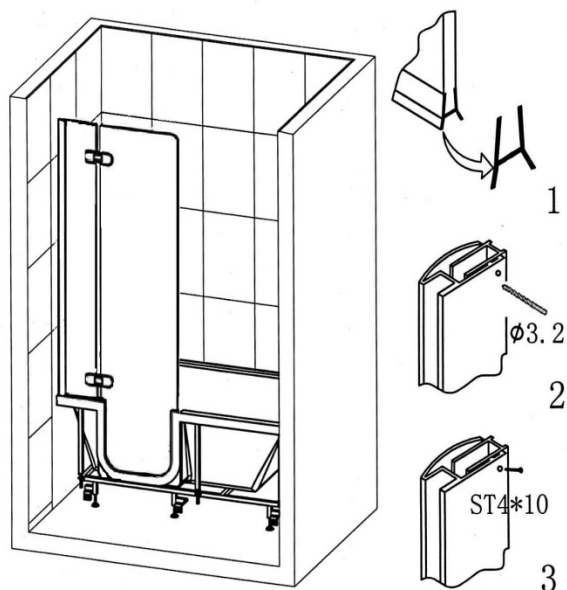
7. Remove the fixed glass panel and drill the marked holes.



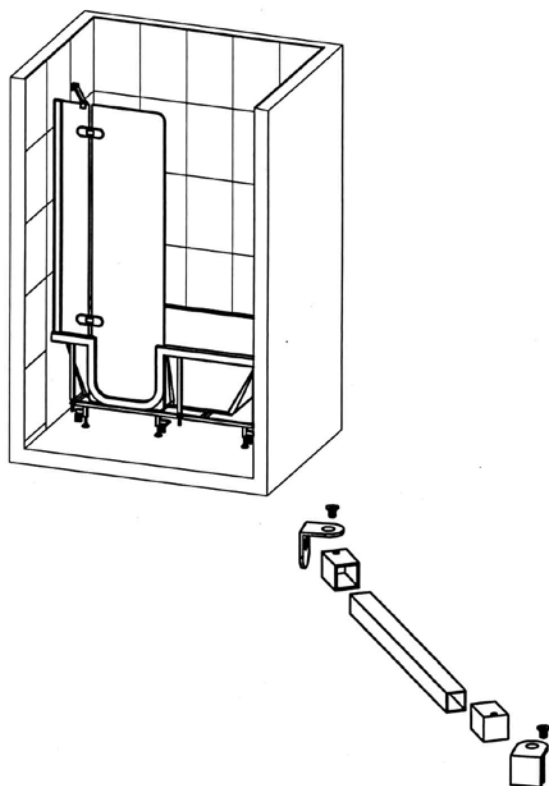
8. Lay flat the fixed glass and the door. Use the hinge assembly to attach the both glass panels together.



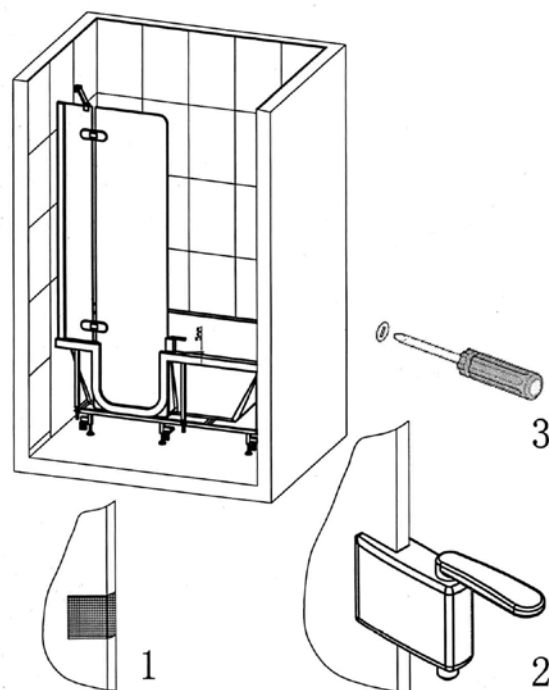
9. Install the door assembly unto the tub and inside the wall mount.



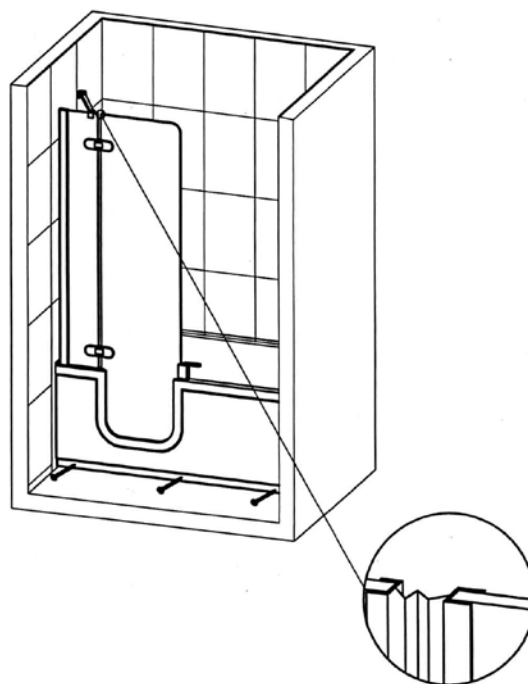
10. Install the wall bracket on the fixed glass panel.
The bracket should be installed in the middle of the wall. (Note: Mark the position of the shower head so the bracket does not interfere.)



11. Install the locking mechanism.

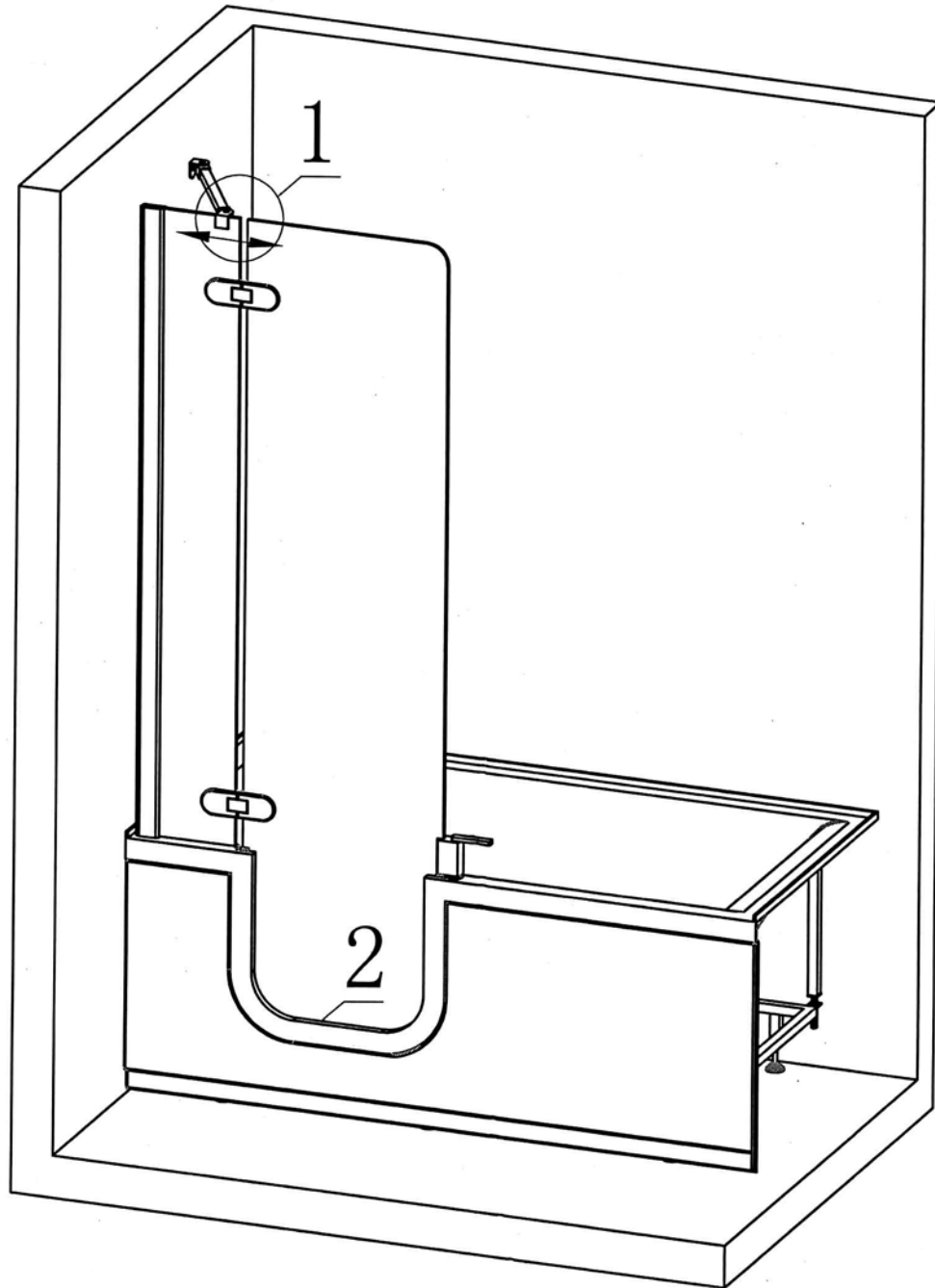


12. Install the plastic door seal (gasket)



13. Water test:

After installation, the tub has to be checked for leaks. Close and lock the glass door. Fill the tub to the overflow control. If the tub has water leak at the door, adjust the location of the wall bracket (1) to right or left. By doing so, the lowest part of the glass door will get closer to the tub. Lightly push the on the bottom of the glass door (2) to see if there is a gap between the tub at the door gasket. If there is still a gap, adjust the bracket location again. Once there is no gap, tighten the bracket (1) into place, test for leaks again.



For any technical questions, please contact the manufacturer at 1-866-783-2661

homeward**b**ath

22900 Miles Rd
Cleveland, OH 44128
Phone: 866-783-2661
Fax: 440-348-2336
www.homewardbath.com

