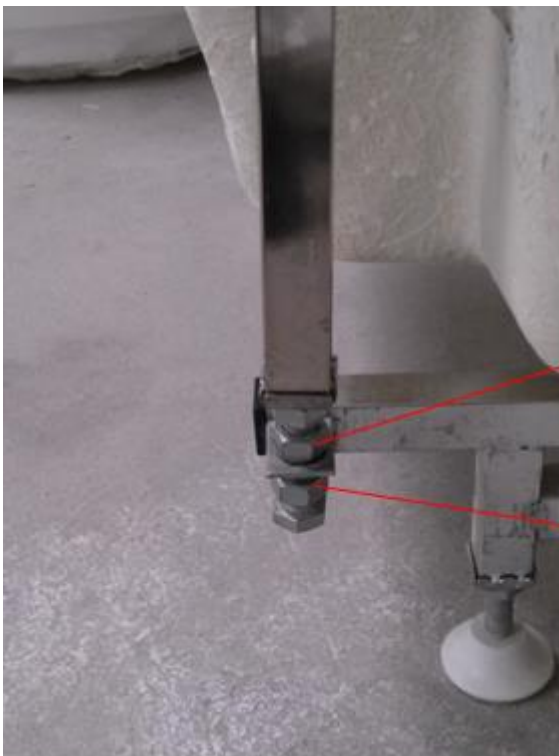


How to adjust the HW tubs

1. Adjust the height of the stainless steel poles to solve the leakage of glass door.



Stainless steel poles



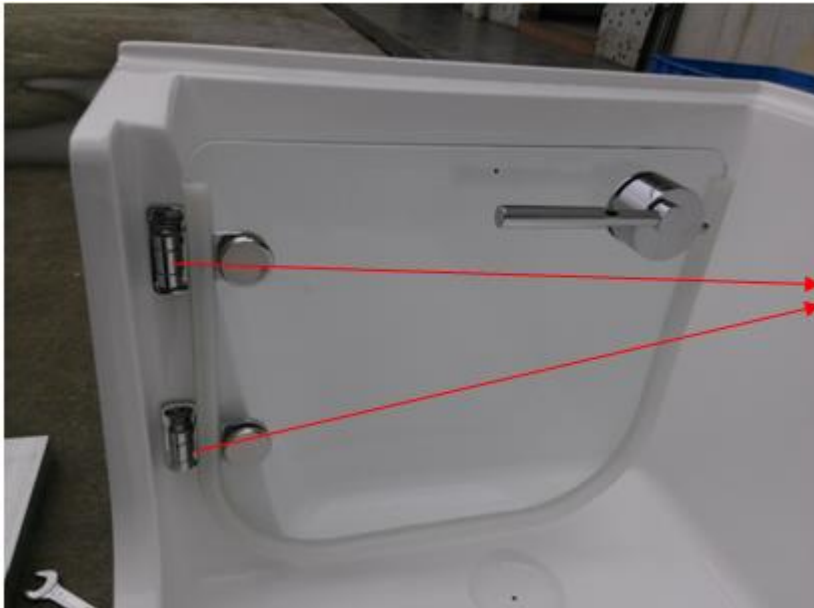
Upper adjusting nut on the stainless steel pole

Lower adjusting nut on the stainless steel pole

Upper adjusting nut: rotate the upper nut clockwise (with a #17 spanner), the upper side of the opening will bend inwards (as seen in Video 1). Tighten the lower nut when the door seal are tightly held against the opening.

Lower adjusting nut: rotate the lower nut counter-clockwise (with #17 spanner), the upper side of the opening will bend outwards (as seen in Video 2). Tighten the upper nut when the door seal are tightly held against the opening.

2. Adjust the screws of the door hinges to solve the leaking problem.



Door hinges

Method of adjustment: remove the decorative covers, loosen the screws and adjust the door inwards or outwards, until the door seal is held tight against the opening. Then tighten the screws and snap the covers back on.

Adjusting the door hinge screws will not result in a leakage on the back side.