

# STEAM PLANET

By homewardbath

## Galaxy Series

### Installation & Operations Manual



**WS-112**

**Note:** You must read all installation & operation instructions prior to assembly and use of this unit.

## Table of Contents

TOOLS REQUIRED FOR INSTALLATION:	1
PRODUCT FEATURES	1
UNIT INFORMATION	1
ELECTRICAL INFORMATION	2
PLUMBING INFORMATION	2
PLUMBING REQUIREMENTS	2
GENERAL INFORMATION	2
SHOWER PAN OPTIONS	2
BASE INSTALLATION INFORMATION:	3
INSTALLATION INSTRUCTIONS FOR WS112 ALL SIZES	4
DOOR FRAME ASSEMBLY	4
INSTALLING SHOWER WALLS	4
INSTALLING THE CEILING	5
INSTALL THE GASKETS	6
HANDLE ASSEMBLY	6
TRIM FLANGE ATTACHMENT	6
HANDLE ATTACHMENT	6
TEMPERATURE ADJUSTMENTS	7
PFISTER MAINTENANCE & CARE	7
TROUBLESHOOTING TIPS	7
CLEANING CARTRIDGE	8
CLEANING AND MAINTENANCE FOR ALL UNITS	8
STEAM GENERATOR CLEANING FOR ALL UNITS	8
GENERAL USE AND MAINTENANCE FOR ALL UNITS	9
CONTROL PARTS INFORMATION FOR STEAM SHOWER FOR ALL UNITS	9
LCD DISPLAY:	9
CONTROL PANEL FOR STEAM SHOWER:	9
CONTROL PROCEDURES	10
TROUBLESHOOTING FOR STEAM CABIN	13
ELECTRICAL SCHEMATIC	14
REPLACEMENT PARTS	15
WARRANTY INFORMATION & REGISTRATION	15

Thank you for selecting Homeward Bath Steam Rooms.

In order to operate and use the product properly, please follow all instructions provided in this User's Manual. Our company reserves the right to change the Manual at any time. The manual takes effect the date it is published. This manual shall prevail if there is any difference between this and previous documents and manuals.

### **WARNING!**

Note: Within the Warranty period, please don't take off the decals from the computer control boxes and the steam generator without manufacturer's permission. Have only licensed professionals install or perform any maintenance. Generally, our technicians can troubleshoot most problems over the phone. When calling for service questions, please provide your model number, serial number, purchase order, and type of problem you are having.

## TOOLS REQUIRED FOR INSTALLATION:

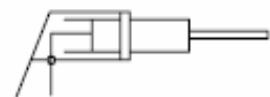
Level



Screw driver #2 Phillips



Silicone



Wrench



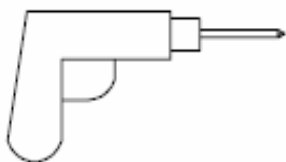
Electric Drill



Square Ruler



Rubber mallet



## PRODUCT FEATURES

DESCRIPTION	WS112(32)	WS112(36)	WS112(40)
4.2kW Quick heating -Self-Draining Steam Generator	✓	✓	✓
Steam Aromatherapy Cup	✓	✓	✓
Body Massage Jets	✓	✓	✓
Hand-held Shower w/ Various water massage settings & adjustable height bracket	✓	✓	✓
8 inch (203mm) wide water-drenching Rainfall Shower	✓	✓	✓
Thermostatic / Anti-scald Faucet	✓	✓	✓
Strengthened Black Back & Side Tempered Glass walls	✓	✓	✓
Clear Glass Front & Doors (easily reversible)	✓	✓	✓
24Inch (610mm) Swinging Door	✓	✓	✓
Polished Aluminum Trim	✓	✓	✓
"Glass Touch"/no seam Control Panel	✓	✓	✓
FM Radio	✓	✓	✓
Wireless transmitter for Radio	✓	✓	✓
"Chromatherapy" LED multiple Color Lighting	✓	✓	✓
Waterproof Oak Shower floor Grid	✓	✓	✓
Accessory Rack	✓	✓	✓
Circulation Fan	✓	✓	✓
Alcove Free Standing Unit	✓	✓	✓
Removable Wood Stools	✓	✓	✓

## UNIT INFORMATION

Model	Electric Parameter			Size		
	Voltage	Power	Frequency	Length	Width	Height
WS112(32)	220V	4.2KW	60-50Hz	1500mm/59 Inch	813mm/32 Inch	2150mm/84.5 Inch
WS112(36)	200V	4.2KW	60-50Hz	1500mm/59 Inch	915mm/36 Inch	2150mm/84.5 Inch
WS112(40)	200V	4.2KW	60-50Hz	1500mm/59 Inch	1015mm/40 Inch	2150mm/84.5 Inch

**Steam Ready:** 1-2 minutes, optimum room temperature reached within 2-5 MIN

## ELECTRICAL INFORMATION

- 1 dedicated 12-2 wire with 20 amp GFCI breaker (220V)
- **Connect the overhead light, speaker, fan, CD, telephone according to the tags on the wires.**
- **Do not connect the wire "O3" to anything.**
- **Connect main power supply.**

## PLUMBING INFORMATION

The unit is equipped with 3 ft. hot and cold, metal braided water supply hose with ½-inch national pipe thread to connect from faucet/manifold (Manifold is located. 4 ft. high on rear of unit) to the shutoff valves (should be installed where they can be accessed). Note: base edge sets directly against back and sidewall. Do not install any pipes along walls as to impede the base from setting flush against them.

- Install hot and cold shutoffs with ½ -inch male national pipe thread (not included). Install shutoffs where they can be accessible.
- Access panel near controls, pumps, and jets is recommended
- **Drainage:** It is advised to have base onsite before preparing drain location. The diameter of the drain hole should be larger or equal to Ø40mm (1 3/5 inches).
- **Note:** The flexible drain hose included with acrylic base is for installation into a floor drain only. Substituting the this drain setup for a setup of the installers' choice will not void the warranty of the unit as long as there is no evidence of misuse or damage to the base. If the substitute drain system is used, a 3/8 in stub must be added to the main shower drain line to connect the steam generator's automatic flushing drainage hose.
- **All fixtures and fittings must be checked for tightness as they may have been loosened during transport**

## PLUMBING REQUIREMENTS

- The unit is equipped with hot and cold, metal braided water supply hoses with ½" national pipe threaded fitting.
- Need to install hot and cold shutoffs with ½" -male national pipe thread (not included).
- All fixtures and fittings must be checked for tightness as they may have been loosened during transport
- **Note for Acrylic Base ONLY:** The flexible drain hose included with this unit is for installation into a floor drain only. Substituting the existing drain setup for one of the installers' choice will not void the warranty of the unit as long as there is no evidence of misuse or damage to the base.

## GENERAL INFORMATION

- The main wall panel with water manifold and electrical equipment is designed to be installed on the left side of unit. If water and electrical connections are on the right side, these side wall panels are interchangeable (please call Homeward Bath technician before this is done). This must be completed onsite by installer.
- Units come broken down in panels and are assembled with screws, nuts and bolts on site.
- All Acrylic shower bases need to be leveled in its final resting position (all feet must be touching the ground), mark the placement.
- All Stone shower bases may need to be set and leveled in place on a bed of thin set mortar.
- It is advised to have base onsite before preparing drain location.
- Access near controls and jets is recommended.

**Manufacturer reserves the right to change specs or features at any time.**  
**Please check to confirm details. 1-866-783-2661**

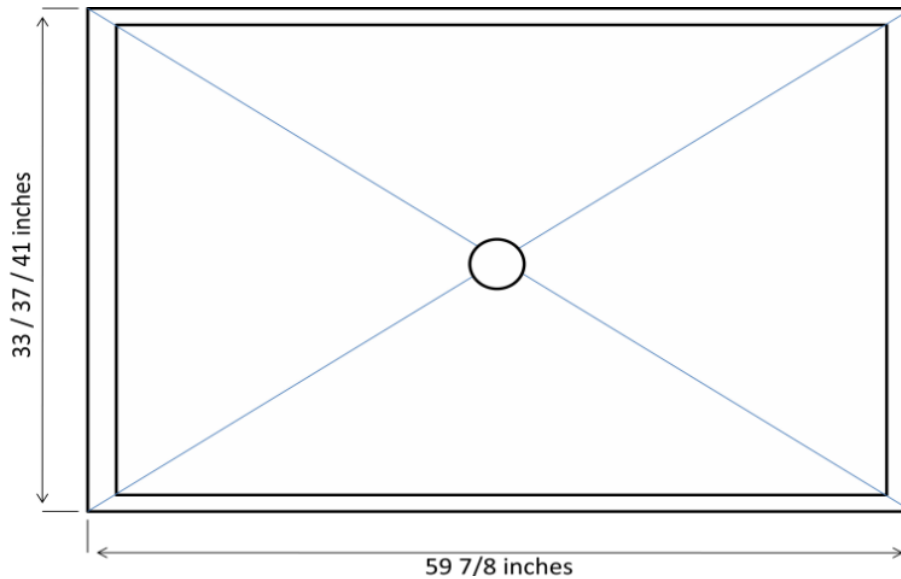
## SHOWER PAN OPTIONS

The standard WS-112 shower enclosure does not include a base. It was designed so that it can be installed over an existing base/floor of your choice of optional bases Homeward Bath provides.

Homeward Bath's offers two base options:

1. A man made "cultured stone" base that requires some type of cement/thin set mortar foundation. Height is  $1\frac{3}{4}$ in.
2. A flush-to-floor acrylic base with fiber glass backing that requires some type of cement/thin set mortar foundation. Height is  $2\frac{1}{2}$  in

**Note:** both types of bases have identical width and length.



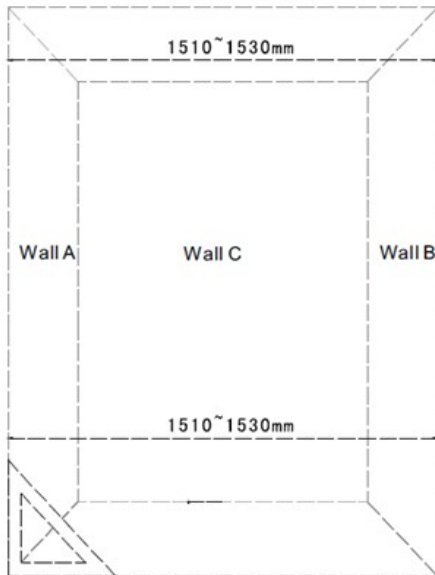
#### BASE INSTALLATION INFORMATION:

Base needs to be set in the final resting space and leveled. Use standard base installation to secure the base in place. The drain hole is  $3\frac{1}{4}$ " inches in diameter. It is located in the center of the base. The unit is assembled and sets entirely inside the stone base's water edge.

**NOTE:** When assembling the Model WS112 using Homeward Bath's bases, disregard the instructions that say to drill holes in the base to secure the panels. The base was redesigned so this step can be eliminated.

## INSTALLATION INSTRUCTIONS FOR WS112 ALL SIZES

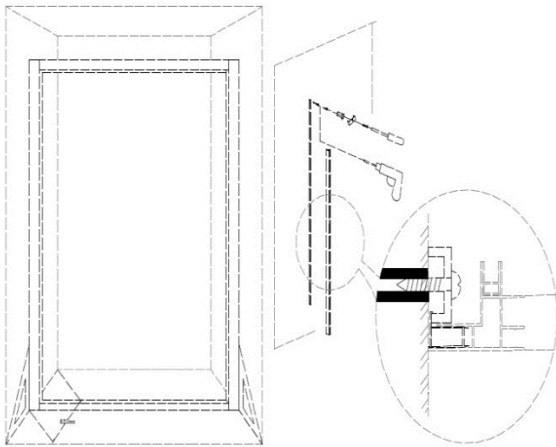
1. The distance between Wall A and Wall B should be at least 1510mm (59.5 inches).
2. The minimum height for the unit (not including any base) is 84.5 inches.



1510mm to 1530mm = 59.5" to 60.3"

### DOOR FRAME ASSEMBLY

**Note:** For California only: Attach the door frame brackets with self-tapping screws and expanding bolts.



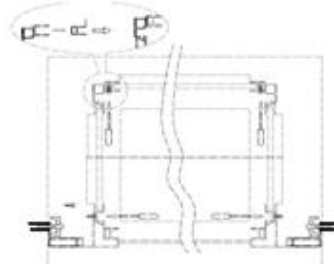
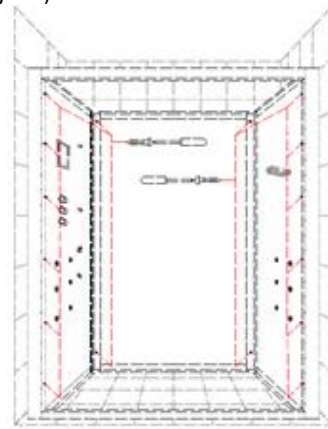
1. Bottom horizontal rail has wide opaque gasket, top horizontal rail has grey gasket.
2. The 5inch side panel trim piece has to be removed to expose assembly screw holes.
3. Check to make sure the screw holes are tapped, on the top and bottom horizontal rails.  
Note: if they are not tapped, tap before assembling
4. To assemble front frame, you will need at least 6" #2 Philips bit. It is advised to use an impact driver. Do not over tighten.

5. Each 5" frame sidepiece has 2 grey rubber gaskets on top and bottom. Bottom piece has to be all the way down, top piece – all the way to the top.
6. Assemble horizontal rails to wide vertical rails with ST4X50 self-tapping screws.

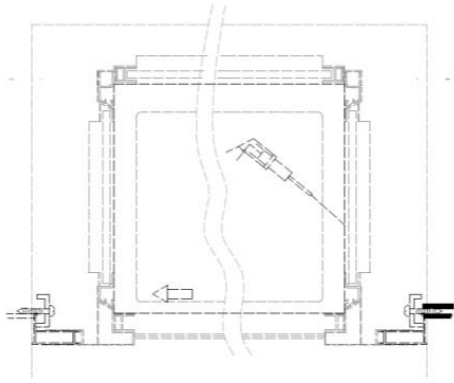
### INSTALLING SHOWER WALLS

**Note:** It is advised to assemble to soap dish with M4X25 screws (2 screws, 2 nuts, 2 bolts, 2 brass washers, and 2 caps) before putting any panels together. Also attach the sliding bar for the handheld shower on the left side. Hardware is inside cloth bag.

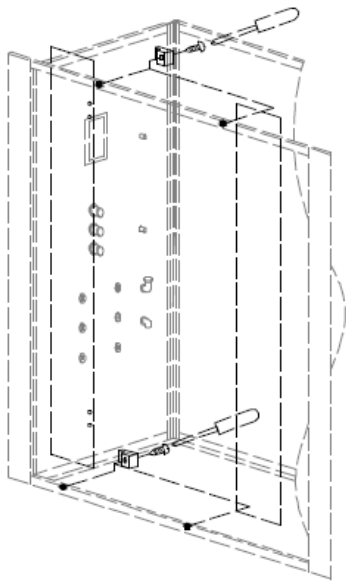
1. Place large back panel on back side of base.
2. Remove trim piece from right side of left side glass panel. This will expose the assembly screw holes.
3. Attach power supply and water supply to the left side panel.
4. Attach left side panel to back panel using ST4X16 self-tapping screws (pre-drilled holes should line up)
5. Attach right side panel in same fashion as previous step.
6. Attach the front glass frame that was assembled before, using the ST4X16 self-tapping screws.
7. Run the drain hose from the steam box, through the small hole on the bottom center of the left side panel. Hose should extend into shower room. (Will be covered by floor grids).



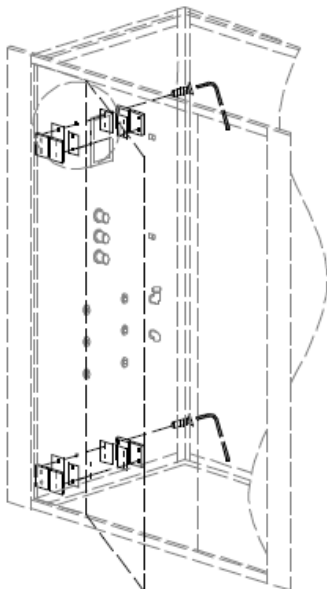
8. Seal unit to the acrylic base along the walls leaving the corners open.
9. Attach all sides with tapping screws and blocks
10. Apply silicone to seal the gap between panels and floor. Leave the corners without silicone.



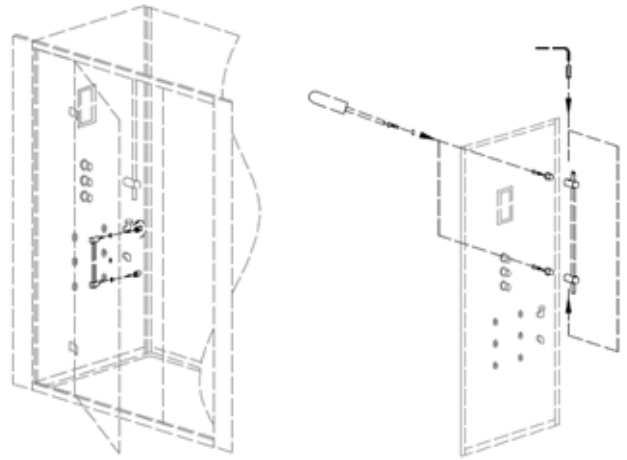
**Note:** Panel with hinge holes goes on the left side. Install the front fixed glass panels. Remove plastic clip in horizontal frame, slide glass in place, and reattach clip to hold glass into place. Do the same for the right side.



11. Install the hinges on the left side glass, then attach door to hinges.

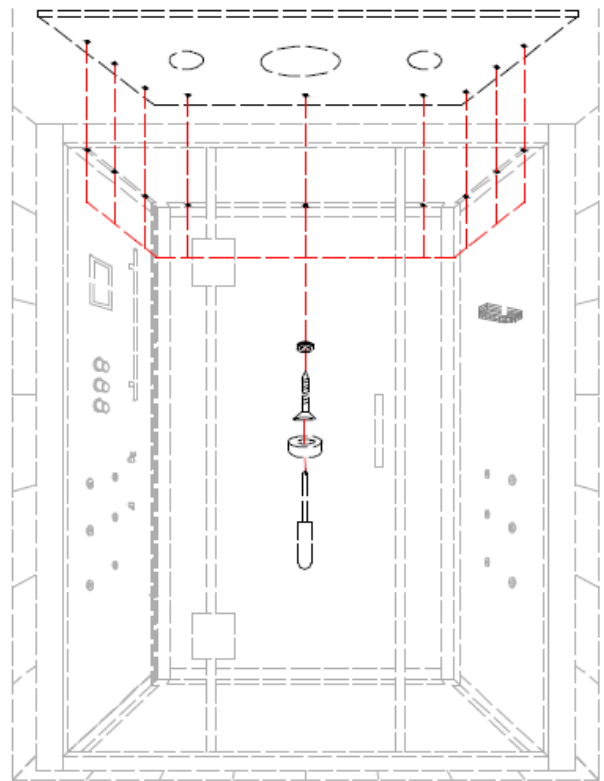


12. Install the door handle & adjustable handheld shower bar (if not done in previous steps.)



## INSTALLING THE CEILING

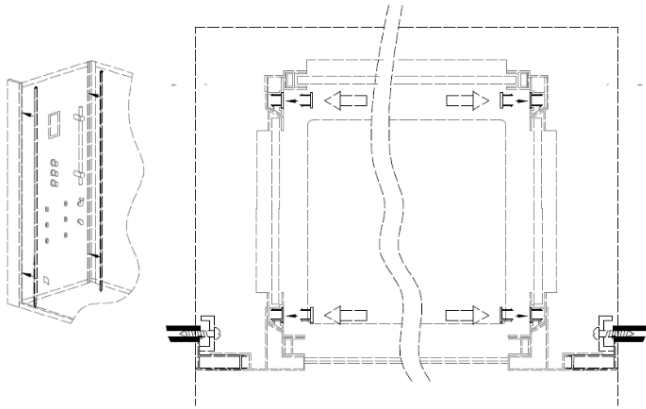
1. Connect the power to the fan, light, and speaker plugs. The accessories are marked.
2. Align holes on the left, right, and back side, with the holes on the left, back, and side panels.
3. Using ST4X20 screw kits. (Screw, brass washer, decoration cap), install the ceiling with wood screws and cover with decorative caps from the inside. The 3 front screws go from top down and don't need caps.



4. Attach hoses to rainfall showerhead and connect the right-side body jets with the hoses provided.
5. Reinstall the aluminum trim on side panels

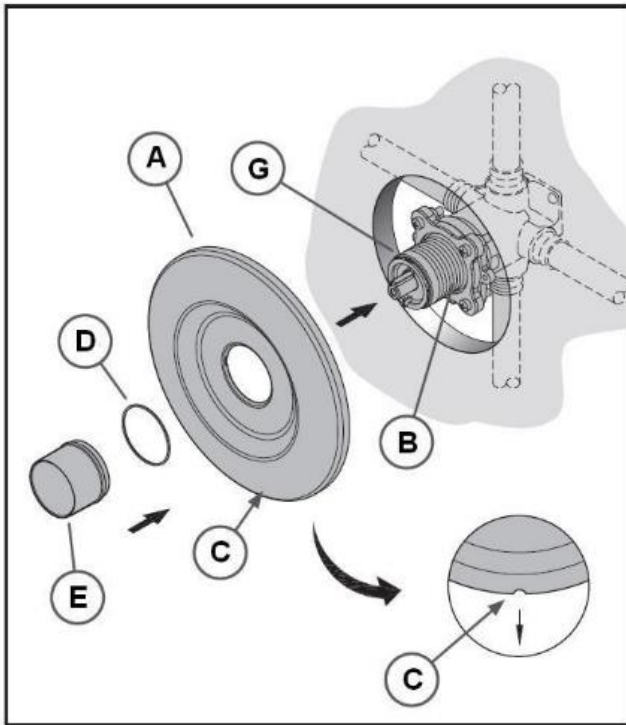


## INSTALL THE GASKETS



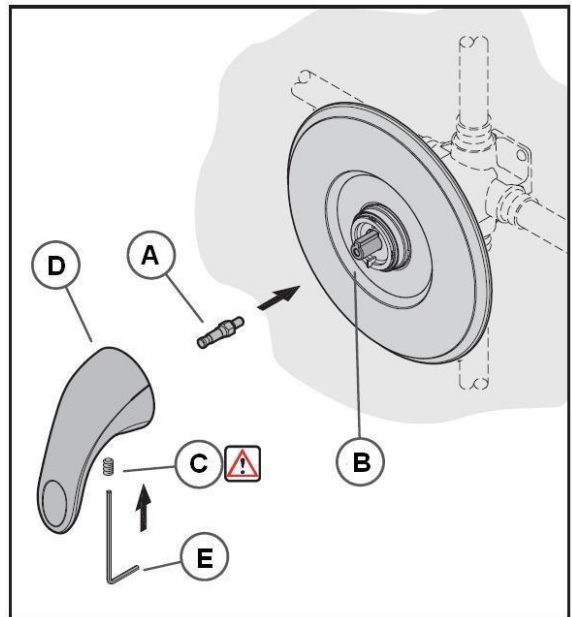
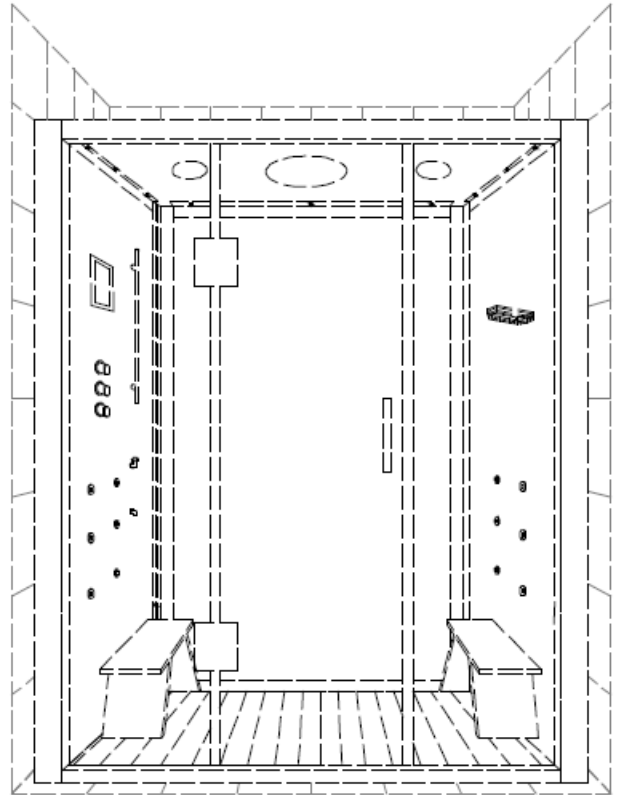
1. Once all is connected, place the wooden shower grid floors and benches inside the unit.
2. Please, do not use the unit for at least 24 hours or until the silicone is completely dried.

## HANDLE ASSEMBLY



## TRIM FLANGE ATTACHMENT

1. Position trim (A) on the valve (B) with drain hole (C) at the bottom.
2. Place protective washer (D) on the short end of the reversible retainer sleeve (E).
3. Screw retainer sleeve (E) onto threaded section of the stem and bonnet (G).
4. Tighten retainer sleeve (E) by hand until flange (A) is snug to finished wall surface.
5. If the short end of the retainer sleeve (E) is too short, reverse it to use the longer end.



## HANDLE ATTACHMENT

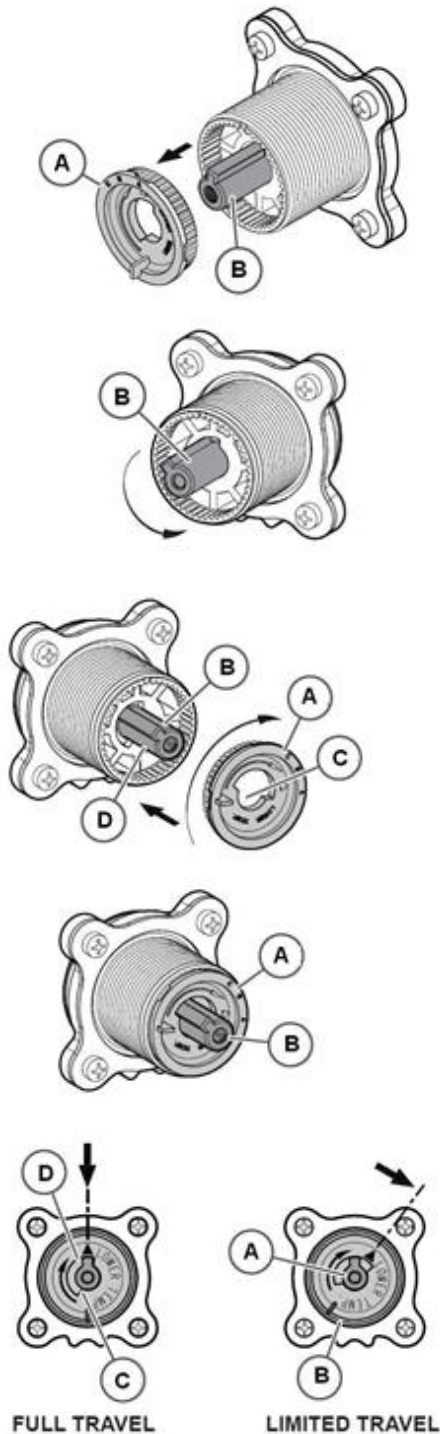
1. Screw stem extender (A) onto the valve stem (B).
2. Thread the set screw (C) into the handle and thread it, in only three or four turns.
3. With valve in CLOSED position, place handle (D) onto the stem extender (A) and tighten the set screw (C) by using the hex wrench (E) that is provided.



Make sure set screw (C) is tightened to the handle (D).



## TEMPERATURE ADJUSTMENTS



Adjustment gear (A) is factory-set to prevent the stem from reaching full hot position.

To adjust stem rotation:

1. Remove adjustment gear (A).
2. Rotate stem (B) counterclockwise to determine a maximum desired temperature.
3. Replace gear aligning adjustment stop (C) to stem tab surface (D) so that it cannot move beyond adjustment point.

## PFISTER MAINTENANCE & CARE

### Disassembly:

1. Replacement parts may be available at Lowes or Home Depot.
2. When replacement parts are not available, please write or call Price Pfister Consumer Service.
3. **Always turn off water and release pressure before working on your faucet.**

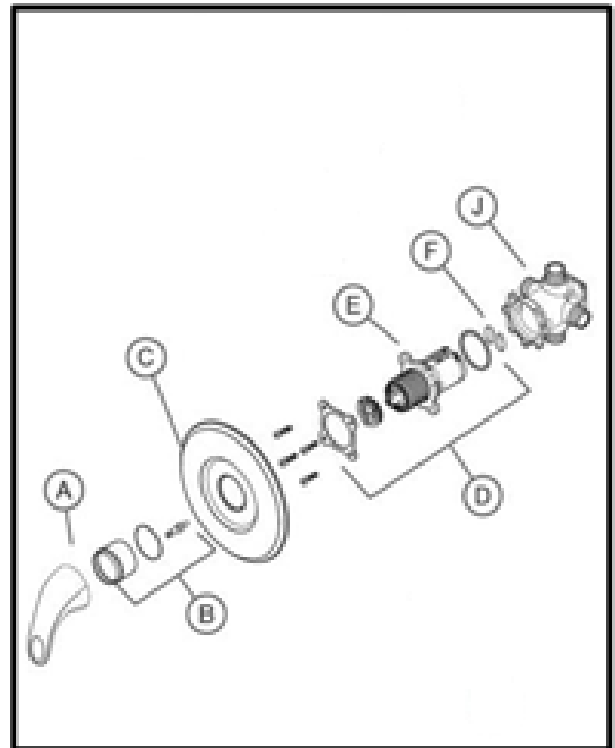


**Note: Trim Care**

### Cleaning instructions:

- For all handles and decorative finishes, use only a soft damp cloth to clean and shine.
- Use of polish, detergents, abrasive cleaners, organic solvents, or acid may cause damage.
- Use of anything other than a soft damp cloth will nullify the warranty.
- Trim products which contain porcelain or other similar substances are not acceptable for public areas or commercial use.
- Installation of said trim is at user's risk!

## TROUBLESHOOTING TIPS



- **Temperature or flow does not remain consistent.**
  - The cartridge assembly (D) may need cleaning.
    - Shut off water supply.
    - Remove handle assembly (A), unscrew retainer sleeve (B) and remove flange (C).

- Remove cartridge assembly (D) and inspect cartridge (E) and inlets for debris or sediment and flush with water.
- Reassemble the whole unit and test. If problem persist you may need to replace the cartridge.

- **Sleeve (B) is too short.**

- Extension kit 910-563 is available at a nominal charge for valves which have been roughed-in too far back in the wall.
- The kit contains a one-inch stem extension, and a sleeve which is one inch longer than the 972-300.

- **Dripping from either the tub spout or shower head.**

- Clean the cartridge assembly (D).
- Check to ensure the two oval O-Rings (F) on the back of the cartridge (E) are in place.
- Reassemble cartridge, stem and bonnet assembly, and handle.
- Turn on the water and test. If the unit still leaks, replace the cartridge (E)

- **Water flow is very low.**

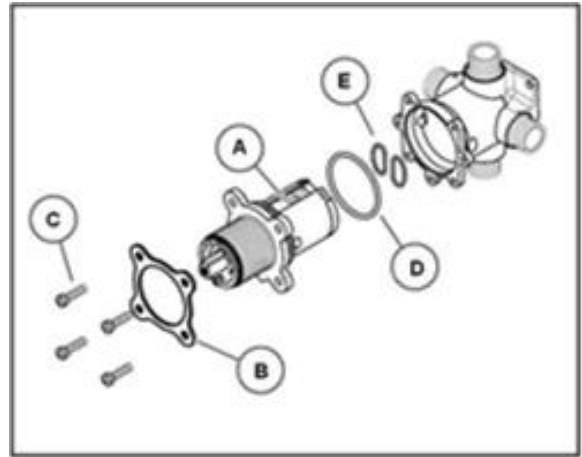
- Check the cartridge assembly (D), for debris.

- **Water starts out hot and becomes cooler as handle is rotated counter clockwise.**

- This is a potentially hazardous situation and should be corrected before using the unit.
- Check the hot and cold inlet positions (hot- left, cold-right). If you have a back to back installation, (where hot and cold inlets are reversed) refer to valve body instruction sheet for back to back installation.

- **Water doesn't get hot enough.**

- Remove hand (A), sleeve (B) and flange (C) and then refer to valve body instruction sheets for adjusting temperature range.



### CLEANING CARTRIDGE

If temperature or flow does not remain constant, the cartridge assembly (A) must be cleaned.

1. Shut-off water supply.
  2. Remove trim assembly (not shown).
  3. Remove screws (C), backup plate (B) and cartridge assembly (A).
  4. Inspect inlets for sediment and flush with water.
  5. Inspect O-rings (D & E) for damage.
  6. Re-install cartridge assembly (A) and backup plate (B) then turn on water supply.
  7. If the problem persists replace cartridge assembly (A).
- **CAUTION:** Do not disassemble cartridge (A).

### CLEANING AND MAINTENANCE FOR ALL UNITS

- Liquid detergents and soft cloth should be used. Do not use any abrasive cleaners.
- The scale on the surface can be cleaned with a soft cloth and nonabrasive cleaner or heated vinegar.
- After every 30 uses, we suggest you clean the steam generator.

We advise using a filtration system for the steam generator unit.

One compatible filtration system option is the -Whirlpool WHKF-DWHV

### STEAM GENERATOR CLEANING FOR ALL UNITS

1. Remove the cover of the cleaning liquid inlet and pour in approximately 1L of citric acid.
2. Start the steam function to fill the steam generator with water.
3. Stop the steam function before the steam starts to come out ("acidic" steam is damaging to plated fixtures).
4. Do not shut off the main power.
5. The scale in the steam generator dissolves and the system drains the dirty water out after 60 minutes.

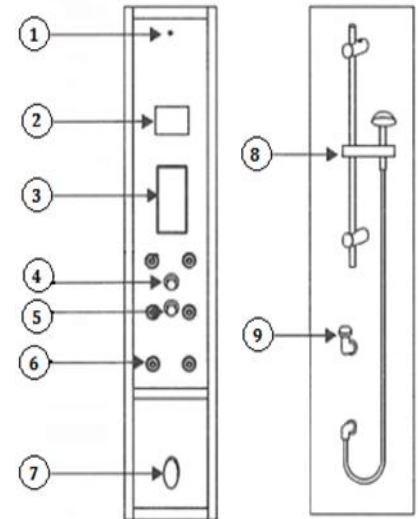


## GENERAL USE AND MAINTENANCE FOR ALL UNITS

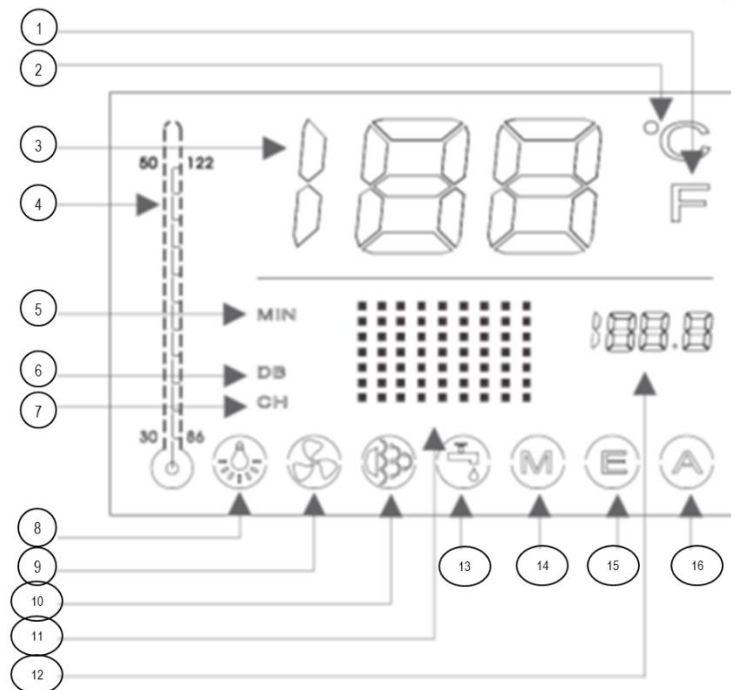
- Drops of water will continue to drain out from the jets and water outlets after use, this is normal and it will eventually stop.
- Abrasive cleaners must not be used.
- Always shut off the power supply when the system is not in use.

## CONTROL PARTS INFORMATION FOR STEAM SHOWER FOR ALL UNITS

1. Steam Temperature Sensor
2. LCD Display
3. Control Panel
4. Water Diverter
5. Water Temperature and Volume Adjuster
6. Back Massage Jets
7. Steam Outlet
8. Handheld Shower Set
9. Steam Generator Cleaning Liquid Inlet

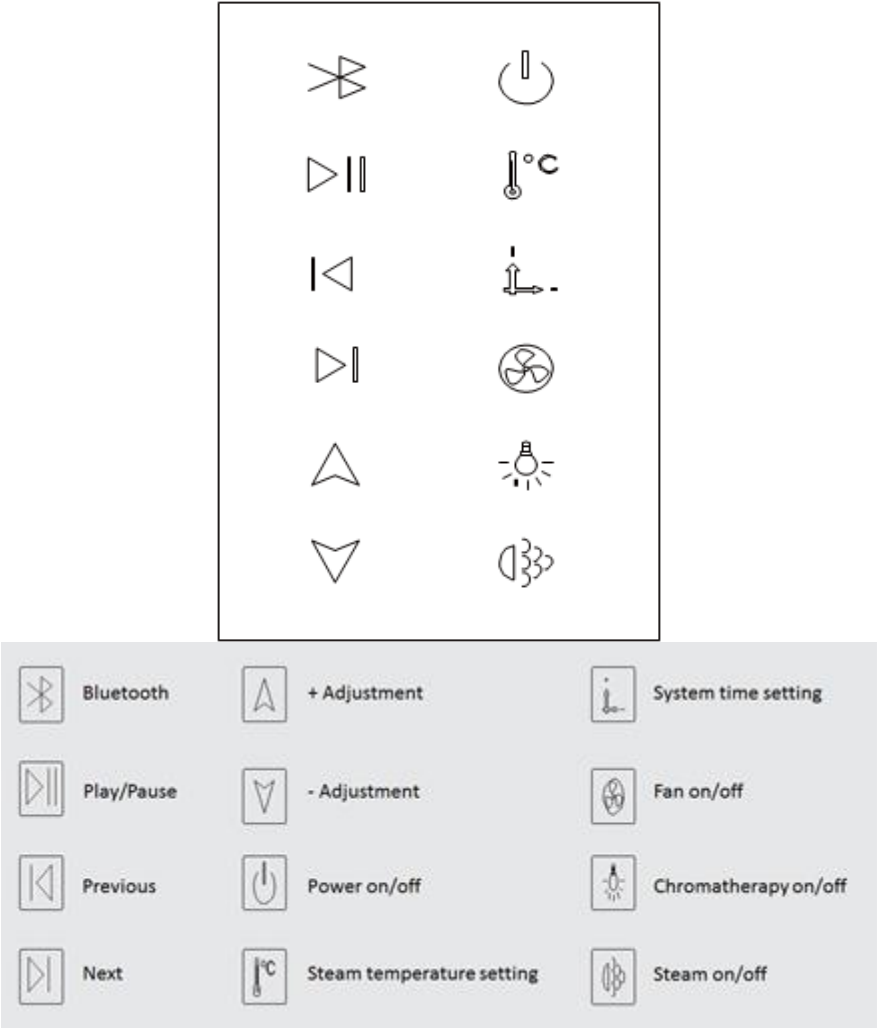


## LCD DISPLAY:



1	Fahrenheit degree	8	Chromotherapy on/off
2	Celsius degree	9	Fan on/off
3	Temperature	10	Steam on/off
4	Temperature indicator	11	Power on indicator
5	Time Setting	12	Bluetooth on/off
6	Volume	13/15	Standby for future upgrade
7	Musical selection	14/16	Standby for S8 system

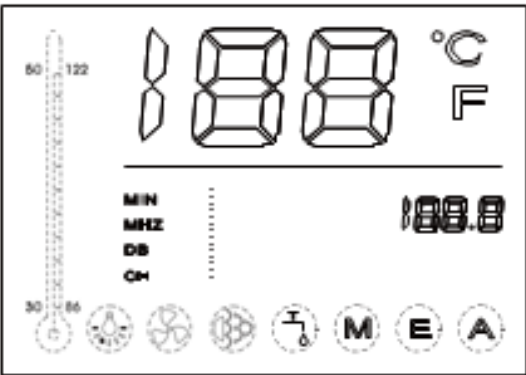
# CONTROL PANEL FOR STEAM SHOWER:



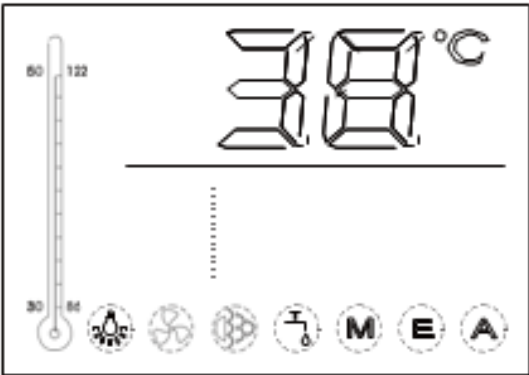
## CONTROL PROCEDURES

### Power on/off

1. Press any button to light up the display and (Picture 1) shows on screen.
2. Then press the power on/off button to start the system and (Picture 2) shows on the display.
3. Press the power on/off button again to shut off the system.
4. The display and background light for the buttons are turned off.
5. The drain valve for the steam generator stays on for 1 minute.



Picture 1

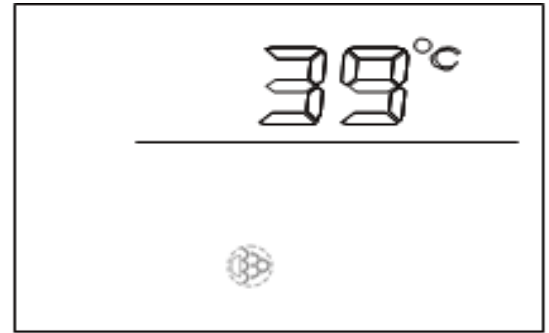


Picture 2



### Steam temperature setting

1. Press this button and picture 3 shows on the display.
2. The temperature setting ranges from 20° to 59°C (68° to 138°F).
3. Press and hold this button to adjust the temperature.
4. Let go of the button when the number reaches the desired temperature and the number is set as a steam setting temperature.
5. The steam generator stops working when the temperature inside is 4°C (39.2°F) higher than the setting temperature.
6. The steam generator has a 4°C variance between accrual set temperature and real temperature.
7. The default steam setting is 45°C (113°F) if the user does not choose any setting.



Picture 3



### Steam time setting

1. Press this button and picture 4 shows on the display.
2. Hold the button down to change the numbers.
3. Let go of the button when the number reaches the desired time and the number is set as working time for the system. The time setting ranges from 20-59 minutes.

The system is automatically shut off when the working time reaches the setting time. The default working time is 45 minutes if the user does not choose a setting for working time of the system.

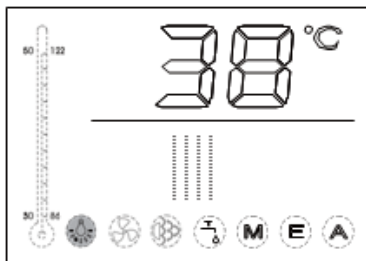


Picture 4

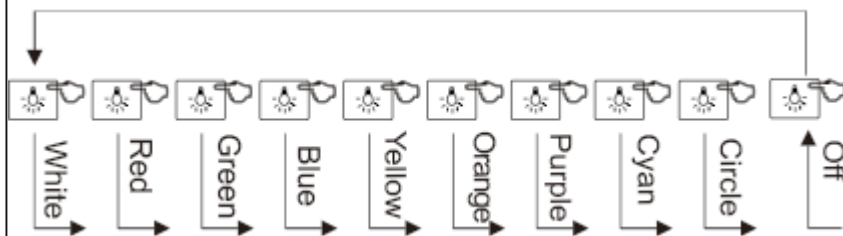


### Chromotherapy

1. This button controls the color of chromotherapy lights.
2. When the chromotherapy function starts, the lamp symbol on the LCD display flashes (refer to picture 5).
3. The order of light color can be found below in picture 6.



Picture 5

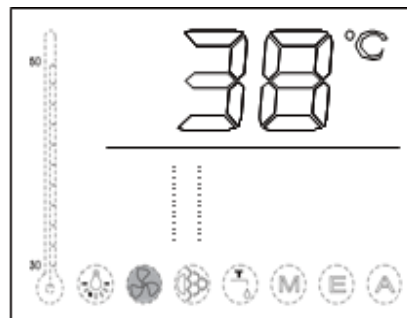


Picture 6

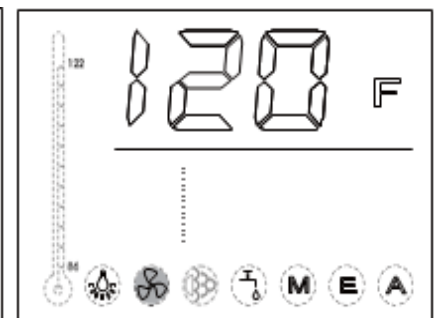


### Circulation fan

1. This button turns the fan on/off.
2. When the fan is on, the fan symbol on the LCD display flashes.
3. Celsius/Fahrenheit Conversion: Press and hold the fan button until the conversion is made between Celsius degrees and Fahrenheit degrees. The display will change from picture 7 to picture 8.



Picture 7

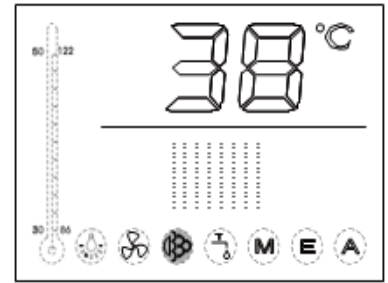


Picture 8



### Steam on/off

1. This button turns the steam on/off.
2. Pressing this button makes the steam symbol on the LCD display flash.
3. The temperature sensor controls the steam output based on the preset steam temperature.
4. The steam generator has a 4°C variance between accrual set temperature and real temperature.
5. Picture 9 shows display when steam is on.

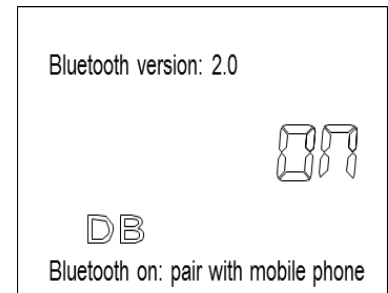


Picture 9



### Bluetooth

1. Press the on/off button twice to start the system, then press this button.
2. Turn on the Bluetooth on the phone and select 'HW-Audio' to pair. (Picture 10)

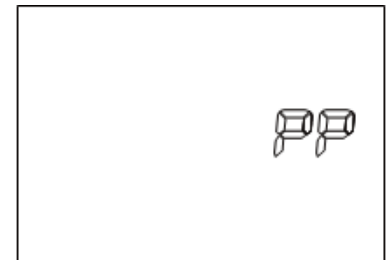


Picture 10



### Play/Pause

After pairing with mobile phone, press this button to play/pause the music. (Picture 11)



Picture 11

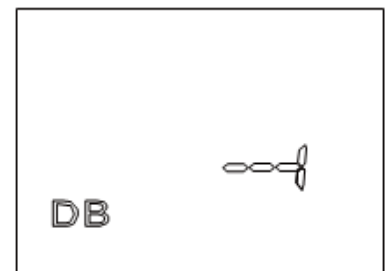


**Vol um e +**



**Vol um e -**

Press these buttons to adjust the volume. The DB symbol on the LCD flashes. (Picture 12)



Picture 12

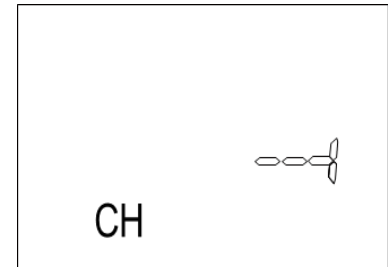


**Previous**



**Next**

Press previous/next to select music and CH symbol on LCD display flashes. (Picture 13)



Picture 13

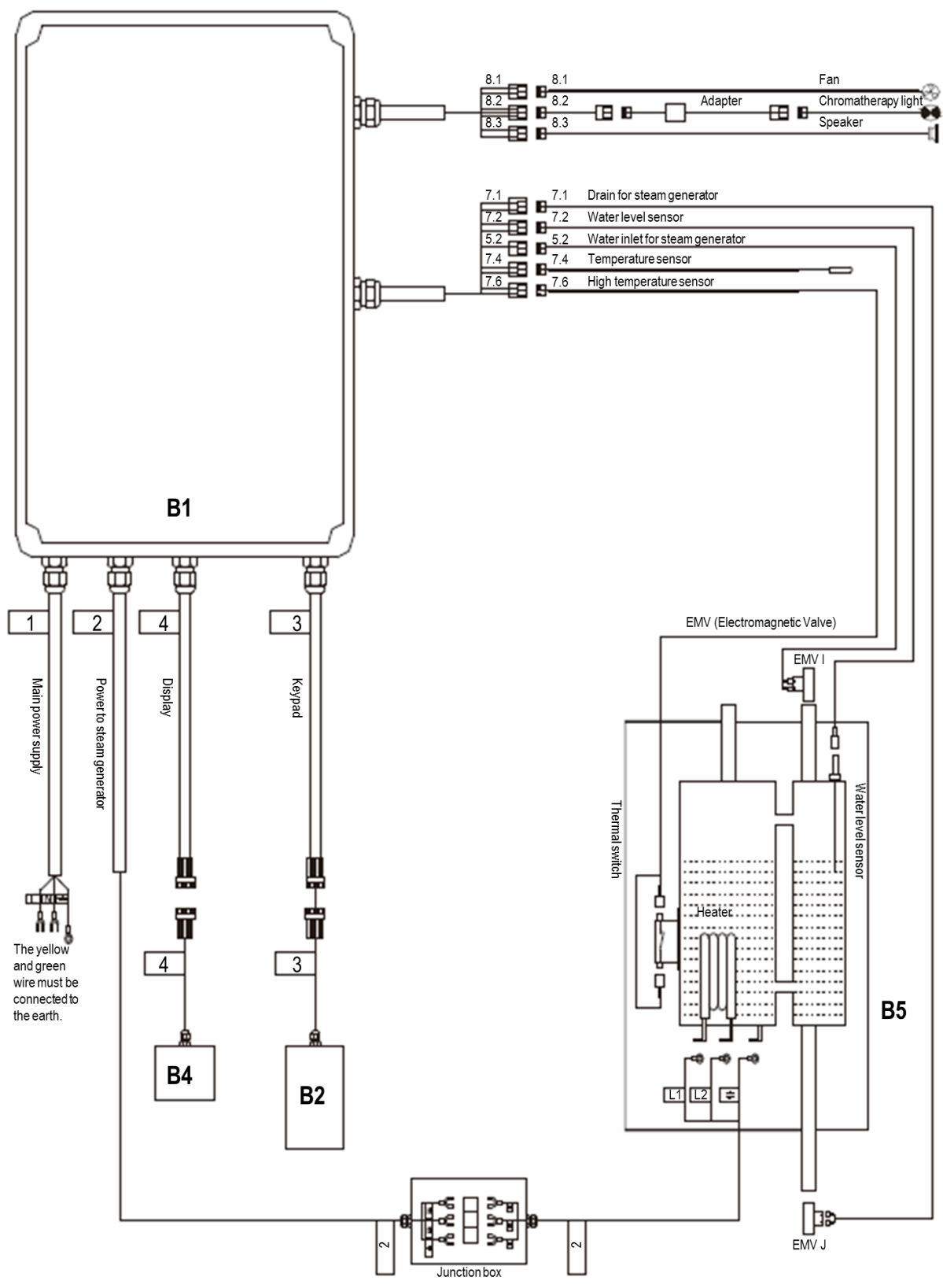
## TROUBLESHOOTING FOR STEAM CABIN

ISSUE	CAUSE	SOLUTION
Touch panel does not work	1. Not connected properly	Check connection between control panel and power box
	2. Wrong voltage	Change to 220V supply
No steam	1. Desired steam room temperature is lower than current temperature	Increase the desired temperature to be higher than current temperature
	2. The water inlet valve is not letting water in	Check water inlet valve for blockage and 12V power supply to valve
	3. The water level sensor is not working (water coming out of steam outlet)	Clean scale of the water level sensor or replace it
	4. Thermal switch in the heater is not working (no steam from generator)	Change thermal switch installed inside the heater
	5. The heater is not working	Change the heater
	6. The water supply is shut off	Open water valve
Steam generator keeps adding water	1. The water inlet electromagnetic valve is not shutting off	Replace water inlet valve
	2. Water level sensor cannot detect signal	Clean scale of water level sensor or replace it
Power supply is off when on/off button is pushed	1. There is short circuit from heater	Replace heater
	2. There is short from thermal switch inside heater	Replace thermal switch
Water leaks from valve	The seal is damaged	Change the seal
Water flow volume is low	Water supply has clogged filter.	Clean Filter.

For additional help, call Homeward Bath at 1-866-STEAM-61.



# ELECTRICAL SCHEMATIC



## REPLACEMENT PARTS

Parts can be purchased by visiting:  
[hwbpro.com](http://hwbpro.com)

You can also request parts that are under warranty by filling out the parts request form at:  
[homewardbath.com/support](http://homewardbath.com/support)

## WARRANTY INFORMATION & REGISTRATION

Please visit our website to complete the online form:  
[homewardbath.com/warranty-registration](http://homewardbath.com/warranty-registration)

Registration must be completed within 45 days of receipt to be valid.

A full description of the warranty is available on the Homeward Bath website.